

Please provide as much detail as possible with samples: name of collector, date, location, tree species, etc.



1. Cut and peel pieces of bark around entrance holes of the beetles.



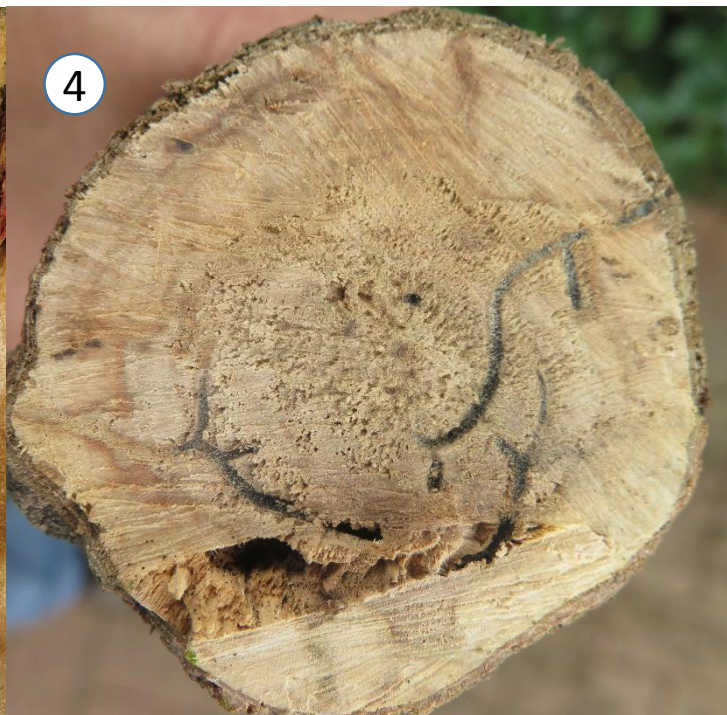
2. Cut or chisel out pieces of stained wood under the bark, around tunnels of the beetles.



3. Cut or chisel out pieces of infested wood.



4. Saw short billets (20-30 cm) of thin trees or branches.







5



6

5. If beetles can be seen, catch or take them out with a tweezer or something thin like a toothpick...

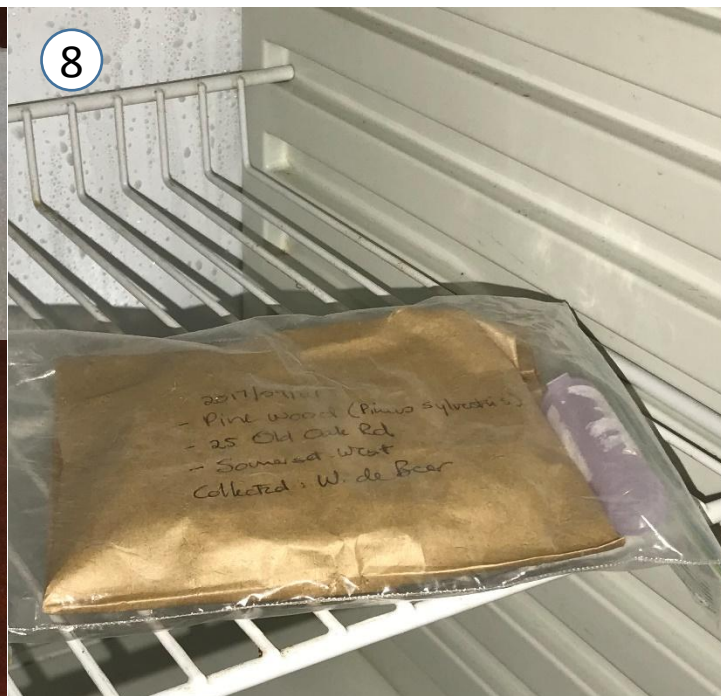
6. ... into a small plastic tube or tablet holder, preferably in ethanol.



7



7. Wrap bark and wood pieces individually in paper or put in paper bag, label with info and place in ziplock bags.



8

8. Keep wood sample and tube with beetles refrigerated (not frozen) until pickup/delivery. Never leave in the sun!

**DO NOT SEND, POST OR COURIER LIVING BEETLES TO US WITHOUT DISCUSSING IT WITH US FIRST, AS THEY CAN EAT THROUGH PAPER AND PLASTIC. WE DO NOT WANT TO SPREAD THE BEETLE AROUND THE COUNTRY!**